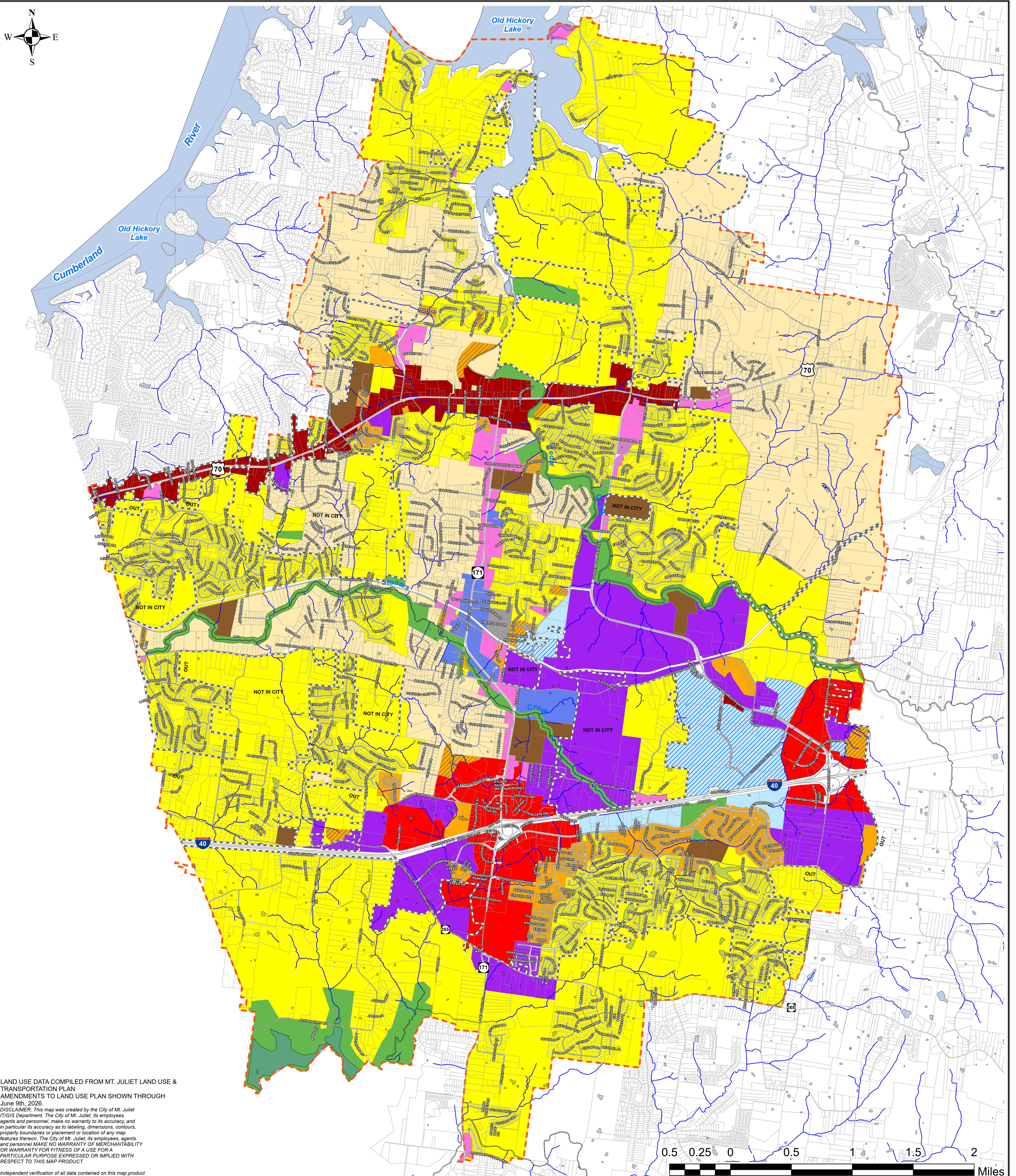


# City of Mt. Juliet

T E N N E S S E E

## Future Land Use



LAND USE DATA COMPILED FROM MT. JULIET LAND USE & TRANSPORTATION PLAN AMENDMENTS TO LAND USE PLAN SHOWN THROUGH JUNE 9th, 2026.  
 DISCLAIMER: This map was created by the City of Mt. Juliet IT/GIS Department. The City of Mt. Juliet, its employees, agents and personnel, make no warranty to its accuracy, and in particular its accuracy as to labeling, dimensions, contours, property boundaries or placement or location of any map features thereon. The City of Mt. Juliet, its employees, agents and personnel MAKE NO WARRANTY OF MERCHANTABILITY OR WARRANTY FOR FITNESS OF A USE FOR A PARTICULAR PURPOSE EXPRESSED OR IMPLIED WITH RESPECT TO THIS MAP PRODUCT.  
 Independent verification of all data contained on this map product should be obtained by any user of this map.

June 9th, 2026

### Legend

- Streets
- ▭ City Limits
- - - Urban Growth Boundary
- Streams
- ▭ Lakes
- ▭ Parcels

### Future Land Use Classifications

- ▭ Low Density Residential
- ▭ Medium Density Residential
- ▭ High Density Residential
- ▭ Multi Family
- ▭ Neighborhood Commercial
- ▭ Thoroughfare Commercial
- ▭ Interstate Commercial
- ▭ Town Center
- ▭ Business Development Center
- ▭ Business Development Center-Impact Zone
- ▭ Mixed Use
- ▭ Light Industrial
- ▭ Parks and Greenways
- ▭ Schools



Prepared by City of Mt. Juliet  
 IT & GIS Department  
 Rob Ealy, GIS Administrator  
[www.cityofmtjuliet.org](http://www.cityofmtjuliet.org)

C:\Future\_Land\_Use\_6\_9\_26.aprx  
 Map Updated: 9 June 2026  
 Map Plotted: 9 June 2026