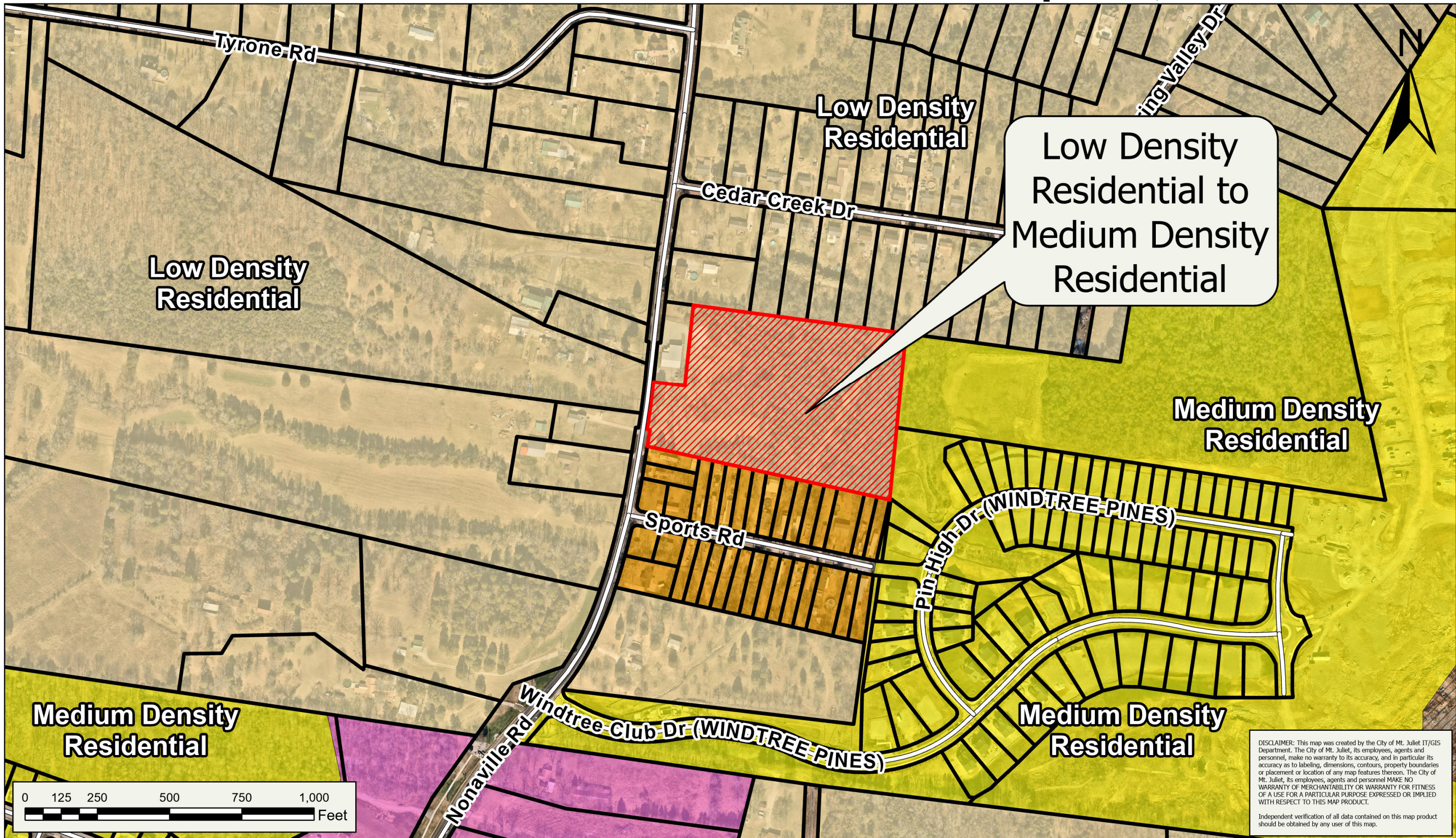




Exhibit A- Future Land Use Amendment

Godfrey Subdivision Map 050, Parcel 100.00



Low Density Residential to Medium Density Residential

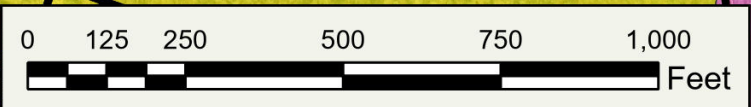
Low Density Residential

Low Density Residential

Medium Density Residential

Medium Density Residential

Medium Density Residential



DISCLAIMER: This map was created by the City of Mt. Juliet IT/GIS Department. The City of Mt. Juliet, its employees, agents and personnel, make no warranty to its accuracy, and in particular its accuracy as to labeling, dimensions, contours, property boundaries or placement or location of any map features thereon. The City of Mt. Juliet, its employees, agents and personnel MAKE NO WARRANTY OF MERCHANTABILITY OR WARRANTY FOR FITNESS OF A USE FOR A PARTICULAR PURPOSE EXPRESSED OR IMPLIED WITH RESPECT TO THIS MAP PRODUCT.
Independent verification of all data contained on this map product should be obtained by any user of this map.