

CONTAINING 1,640.42 SQUARE FEET, OR 0.038 ACRES, MORE OR LESS

MAP 96J, GROUP F, PARCEL 30.00
MICHAEL VAUGHAN
R.B. 2418, PG 1318, R.O.W.C.T.

AIDAN LANE
(40' PUBLIC ROW)

S81° 38' 05"E
40.98'

N08° 21' 55"E
40.00'

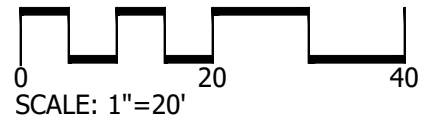
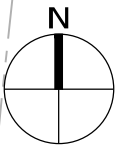
S08° 16' 02"W
40.00'

N81° 38' 05"W
41.04'

POINT OF BEGINNING

MAP 96J, GROUP F, PARCEL 29.00
AMERICAN HOMES 4 RENT
R.B. 1619, PG 1615, R.O.W.C.T.

MAP 96J, GROUP G, PARCEL 45.00
WYNFIELD HOA INC
R.B. 2041, PG 822, R.O.W.C.T.



MAP / PARCEL: _____ PROJECT #: _____
DATE: 03/04/26 CSDG PROJECT #: 16-501-01

AIDAN LANE RIGHT-of-WAY ABANDONMENT EXHIBIT

GRANTEE
WYNFIELD HOA INC

GRANTOR
CITY OF MT. JULIET, TENNESSEE

LAND IN MT. JULIET, WILSON COUNTY, TENNESSEE

